



Mission Statement

of the

Self-committed Network of PT Providers

‘PT-WFD’

to Support the Implementation of the

Water Framework Directive

1 Frame

The implementation of the Water Framework Directive (WFD) requires the design of monitoring programmes for all Member States, based on chemical, biological and ecological measurements. Monitoring data are the basis for regulatory decisions and measures required to achieve WFD environmental objectives, and need to be reliable and comparable. In order to achieve this, appropriate analytical quality assurance and control (QA/QC) have to be established across all EU member states.

The new “Commission Directive 2009/60/EC of 31 July 2009 laying down, pursuant to Directive 2000/60/EC of the European Parliament and of the Council, technical specifications for chemical analysis and monitoring of water status” (QA/QC Directive) requires that laboratories demonstrate their competence by participation in proficiency testing programmes covering all methods of analysis at levels of concentrations that are representative of chemical monitoring programmes carried out under the WFD. The results of participation in those programmes shall be evaluated on the basis of the scoring systems set out in ISO/IEC FDIS 17043 (former ISO/IEC guide 43-1) or in the ISO-13528 standard or in other equivalent standards accepted at international level.

According to the results of a survey conducted within the activities of the EAQC-WISE project, the majority of PT providers organizing PT schemes in WFD relevant fields in Europe do operate according to the most recent international guides in the field (i.e. ISO/IEC Guide 43:1997, ISO 13528:2005). Nevertheless, these guides offer several alternatives both in PT organization and in data elaboration and evaluation. In particular, ISO 13528 allows several possibilities to evaluate laboratories analytical performances and, depending on the approach applied by the PT provider, the same results could in theory be judged to be satisfactory in one PT scheme and not satisfactory in another. In order to achieve a comparable evaluation of laboratory performance in PTs related to chemical monitoring under the WFD, a harmonization of the existing European PT schemes is therefore essential.

2 Mission

The objective of the “Network of PT providers to support implementation of the Water Framework Directive” is to provide harmonised PT schemes that:

- i) meet the specific requirements of the WFD and
- ii) are run and evaluated in a harmonised and comparable way.

This document describes the mission and the organisational details of the self-committed network, whereas the technical details how this harmonisation will be achieved are described in the “Technical Agreement of the Self-committed Network of PT Providers “PT-WFD” to Support the Implementation of the Water Framework Directive”, dated from 10th January 2010.



Besides the harmonized laboratory performance evaluation, the PT-WFD allows the development of synergies among PTs providers. Furthermore, the implementation of common strategies would result in a higher visibility and advertisement, lower risk of failures and lower costs for the PT samples (e.g., grouping orders of the same materials, exchange of materials).

The value of creating such a Network lies in the potential to:

1. Ensure the harmonized performance evaluation of European laboratories involved in WFD monitoring analyses, thus enhancing the comparability of monitoring data obtained throughout Europe.
2. Decrease the cost of test samples, since the highest costs correspond not to the production but to the characterization analysis; the higher number of bottles of material are produced and distributed, the lower is the final price for each bottle. In this case there would also be an indirect benefit for laboratories who could participate in PT exercises at lower costs.
3. Allow the organization at European level of PT for analytes that are analysed only by few laboratories in each country.
4. Increase the European visibility of PT providers in the network, and to enable an economically sound organisation of PT schemes due to synergy effects with other PT providers.
5. Keep a permanent eye on the state of the art, and to react with combined forces on new developments and gaps in the spectrum of needed PT schemes. Being up-to-date based on regular input from external competent advisors will also increase the reputation and European recognition of PT providers in the network.

3 Structure

3.1 General aspects

The PT-WFD is based on a flexible structure with no legal identity and exclusively depending on a self-commitment agreement.

The network members commit themselves to act according to the “Technical Agreement of the Self-committed Network of PT Providers” ‘PT-WFD’ to Support the Implementation of the Water Framework Directive” for those PTs that are carried out under the umbrella and logo of the PT-WFD.

A membership in the network will not impose any restrictions on the PT providers as regards their usual commercial and advertising activities for PTs that are not run under the umbrella and logo of PT-WFD.

The PT-WFD members are PT providers experienced with PT schemes related to WFD monitoring analyses; these PT schemes should be open and available to any laboratory and financed by subscription fees that prevent any unfair competition between the network members.

The structure of the WFD-PT, its entities and their role are described in the subsequent chapters and visualised in Figure 1.

3.2 Ordinary Members of the network

The ordinary members of the PT-WFD are active PT providers, who have demonstrated their competence in organising WFD related PTs (regarding matrix and parameters) and their self-commitment by signature of the “Technical Agreement”. Ordinary members are commonly active



co-operation partners or central co-ordinators of the PT exercises under the logo and umbrella of the PT-WFD.

3.3 External Advisors

This group is formed by organisations that are also active and competent in the field of PTs, but have a primarily scientific interest and/or are involved in PTs or the respective QA/QC surveillance of monitoring labs by appointment (e.g. by their government or competent authorities). External advisors have also demonstrated their commitment to the network by signature of the “Technical Agreement”. Their routinely organised PTs are usually subsidised and therefore not subject to market laws. External advisors may also act as co-operation partners or central co-ordinators of the PT exercises under the logo and umbrella of the PT-WFD if the GA agrees and if financed by subscription fees that prevent any unfair competition between the network members.

3.4 General Assembly of members (GA)

The General Assembly (GA) is formed by all ordinary members of the network.

The GA appoints the Advisory Board, as well as the Chair and Secretary.

External advisors are welcome as guests and/or observers in the GA, but do not have voting rights.

3.5 Chair and Secretary of GA

The chair and secretary are responsible for the organization and management of the network.

They are elected by the GA from the ordinary members for a period of 2 years.

3.6 Advisory Board (AB)

The Advisory Board consists of 10 members. Five members (chair and secretary of GA and 3 others) are delegated from the group of ordinary members present in the GA. Another **five members** are appointed by the GA from the group of external advisors. The AB discusses technical and scientific issues, and prepares proposals for the GA. By support of the external advisors, the AB will check the functioning and action of the network, and it will suggest actions / activities to be proposed to the GA, in order to improve the activities of the network or to react on new developments or gaps.

3.7 Chair of AB

The external advisors in the AB provide the Chair of the AB. All members of AB (ordinary and advisory) elect the Chair of AB for a period of 2 years.

The AB Chair is responsible for the organization and management of the AB with assistance by the GA secretary. The AB Chair prepares and chairs the meetings of the AB and co-ordinates the recommendations of the AB to the GA.

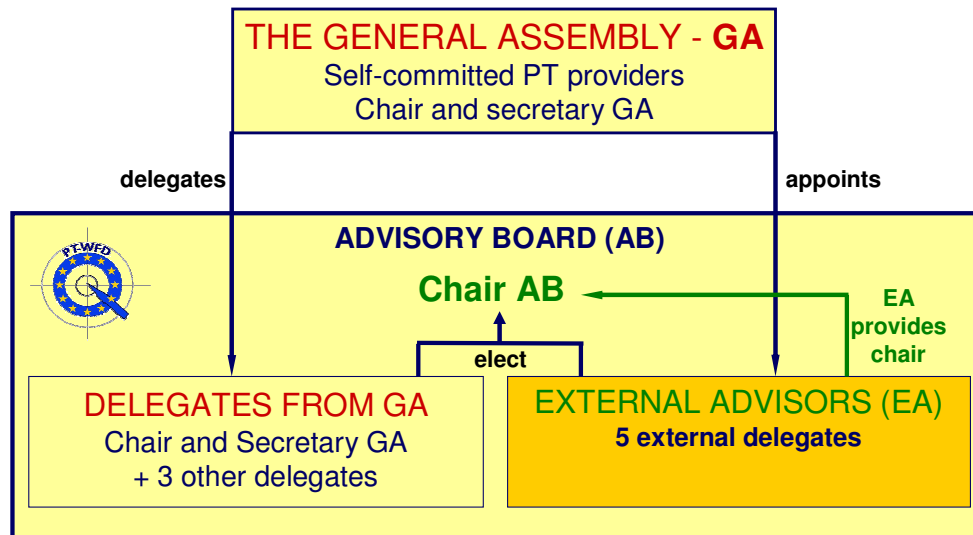


Figure 1 Organisation of the PT-WFD

4 Meetings

The GA meets once per year for discussion and agreement on the following points:

- Technical approaches
- New developments and gaps
- Sharing the past experiences
- Setting up of future programmes
- Joint campaigns
- Decide on proposals / suggestions from the members and/or the Advisory Board.

The AB meets at least once per year to prepare the materials and proposals to be discussed by the GA.

4.1 Workshops

Technical workshops will be periodically organized by the PT-WFD

4.2 Venues

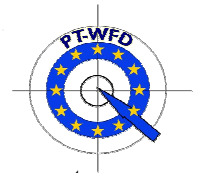
ENEA offers the availability of its infrastructures to host the PT-WFD GA and AB annual meetings, as a follow-up of its activities carried out within the EAQC-WISE project.

IRMM offers the availability of its infrastructures to host the Technical Workshops of the PT-WFD.

5 Operation

There are two different categories of PT exercises under the logo and umbrella of the PT-WFD:

1. **Individual (independent) programmes of each PTs provider:** decision up to each member of the PT-WFD, and under its own logo and umbrella. If such programmes are fully in-line with the harmonized approach specified in the “Technical Agreement”, these individual programmes



may also be run under the logo of the PT-WFD. Network members that are going to carry out such individual programmes under the logo of the PT-WFD shall inform the GA and AB in advance (preferably at the preceding annual meeting), in order to enable other network members to adapt their programmes or to propose joint activities.

2. **Joint PT programmes:** grouping of two or more members of the PT-WFD, under the logo and umbrella of the network, mainly in direct support to WFD and for covering as much as possible its needs. The WFD-PT will not have any direct contact with the laboratories registering with one single PT provider; the confidential relationship between the PT provider and its customers shall be guaranteed. PT test samples will be produced by one producer for all the PT providers who shall follow the same schedule. The results submitted to each PT provider shall be then elaborated together. The data elaboration and reporting, in English language, shall be carried out by one single PT provider for each exercises; The overall work during the year shall be appropriately distributed, as agreed among the PT providers organizing joint exercises. Each PT provider shall be free to eventually translate the report into its national language.

6 Application or affiliation of new members

6.1 New Ordinary Members

The PT-WFD is open for new members. Therefore, the network invites PT providers experienced with PT schemes related to WFD monitoring analyses to join the PT-WFD by an easy and transparent application procedure.

Under the pre-condition that all requirements stated in clause 3.1 and 3.2 are appropriately considered, a new applicant member or interested organisation shall send a request (application form) and supporting/additional information to the Chair of the GA. The GA Chair will evaluate this request (application form) and then circulate it, with their related opinion, among the Ordinary Members represented in the GA for final approval. It is recognized that any membership refusal should be clearly reasoned and be based on the lack of fulfilment of the requirements. No other reason of exclusion may be considered acceptable.

The steps to be followed:

1. The informal request or expression of interest to join the PT-WFD shall be sent to the Chair of the GA.
2. The Chair of the GA sends back the Mission Statement, the Technical Agreement and the Application form to the interested organisation.
3. The Chair evaluates the application and then circulates the request and their related opinion among the Ordinary Members represented in the GA.
4. If there is no objection from the PT-WFD members based on the Mission requirements and if the Chair's evaluation is positive the GA Chair sends a confirmation of the acceptance of the new member.
5. On acceptance the new member will receive all PT-WFD information and communication, and will be invited to the next GA meeting and all other network events.

6.2 New External Advisors

The External Advisors in the network (see clause 3.3) are members of the Advisory Board (AB) (see clause 3.6 and Figure 1). For keeping a balanced situation between the delegates from the



General Assembly (GA) and the External Advisors and with respect to the fixed number of AB members (10 members) it is not foreseen to have a free and open application procedure for this type of members.

If necessity arises to enlarge the AB e.g. for

- the integration of expertise on new technical aspects with respect to the PT-WFD yearly planned activities or for
- the integration of new countries or for
- the integration of new stakeholders

the GA will explicitly **invite** interested new organisations or parties to join the network and to become a new AB member after discussion and appropriate agreement on the new EA member.

Then the GA has also to decide on the enlargement of the AB and finally will delegate an additional Ordinary member to the AB (see **clause 3.2**) per new External Advisor to keep the equality within this board.